

**NEWS RELEASE**  
September, 2006



**Susan B. Allen  
Memorial Hospital**

*75th Anniversary*  
1931-2006

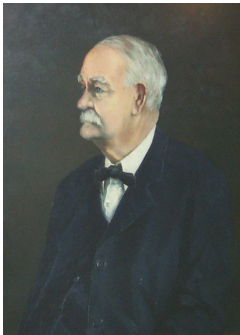
## **SUSAN B. ALLEN MEMORIAL HOSPITAL CELEBRATING 75 YEARS**

Susan B. Allen Memorial Hospital is celebrating its 75<sup>th</sup> Anniversary this September. The Hospital, built in 1931, was made possible by a major gift from Frank S. Allen, a prominent local businessman, who named the Hospital after his mother.

Mr. Allen came to the El Dorado area in 1882, at the age of 25, relocating with his mother from Mason City, Illinois. They came to join his uncle, Daniel Boyden, who had come to the area in 1871 to farm the land. In 1879, Mr. Boyden purchased a set of abstract books and started the Boyden Abstract Company. When Frank came to the area, he went to work for his uncle.



**Susan B. Allen**



**Frank S. Allen**

Mr. Allen worked in the abstract business, and in 1899 bought out the other associates with the business, and continued to run the business as Boyden Abstract until 1920, when he established the F.S. Allen Abstract Company. Mr. Allen studied law and was admitted to the Bar, but never practiced. He was successful in his business, gaining great wealth from oil royalties, land value increases and his abstract business. F.S. Allen Abstract Company had the only complete set of abstract books in Butler County.

In the spring of 1930, Mr. Allen attended an El Dorado Rotary Club meeting where a young, Dr. G.E. Kassebaum was expressing the need for a modern hospital in El Dorado. In June, Mr. Allen announced a gift of \$100,000 in cash, and one-third of a block of land, located at Atchison St. and Central Avenue for a site, and he also donated two large houses, one of which had been his family home.

Construction on Susan B. Allen Memorial Hospital began on January 31, 1931, with Mr. Allen turning the first spade of dirt, along with Board of Trustees and workmen. The cornerstone was laid on May 14, 1931, and construction was completed and the doors opened on September 19, 1931. Total cost for construction of the 50-bed Hospital was \$175,000.



Mr. Allen was a generous man, establishing the Lewis Allen Memorial to construct and operate an orphanage, named St. Joseph Home which was located on north Topeka St. He was also substantially identified with the County's first telephone system.

Mr. Allen died as the result of a fire in a building where he stored private possessions and had offices in 1943. Upon his death, the community was shocked to discover the depth of his wealth. Since he had no living relatives, he donated the entire estate, valued at \$2,165,000, to a trust of which interest may be used to further the operations of the Hospital. At the time, it was the largest single gift ever given in the history of the State of Kansas.

Throughout the years, a number of construction projects were undertaken, increasing the number of beds from 50 to the currently licensed number of 103. In 1998, the Hospital undertook an aggressive 3-phase, \$28 million construction project, aimed at adding needed space, bringing the entire medical staff to one campus, and making access to services much better for the public.

Now, in 2006, Susan B. Allen Memorial Hospital celebrates its 75<sup>th</sup> Anniversary,

being known as an outstanding medical facility with remarkable capabilities and facilities for a hospital its size, and in the size of community it serves. With an active medical staff of 24



physicians, including specialties of family practice, internal medicine, pediatrics, obstetrics/gynecology, general surgery, orthopedic surgery, radiology, urology, and psychiatry, and advanced services such as radiation therapy, dialysis, 64-slice CT, MRI, cardiology, plastic surgery, stereotactic breast biopsy capabilities, and neurology, persons in the Butler and Greenwood County areas can be assured that they have outstanding healthcare options very close to home.

We believe Mr. Allen would be proud, and amazed with the capabilities this Hospital brings to the communities it serves, and the way in which it provides the compassionate care. What began as a discussion at the Rotary meeting in 1930 has turned into an amazing medical community with an outstanding future ahead of it.